

LOAD CHART

MANTIS Model 15010

75 ton Hydraulic Crawler Crane

as originally manufactured and equipped by Tadano Mantis Corporation

with Standard 111.6 ft Main Boom

Capacity Limitations and General Conditions.

This **MANTIS CRANE** as manufactured by Tadano Mantis Corporation meets the requirements of **ASME B30.5**. Structure and stability have been tested in accordance with **SAE J1063 and SAE J765**, respectively. Lifting capacities as determined by boom length, angle or radius, apply only to machines as originally equipped by manufacturer and in a properly maintained condition. Capacities given are maximum covered by the manufacturers warranty and are based on a freely suspended load with **NO** allowance for factors as out-of-level operation, supporting surface conditions, hazardous surroundings, experience of personnel, etc. The operator shall establish practical working loads based on prevailing operating conditions, such as, but not limited to the above.

When making lifts where capacities may be within a zone limited by structural strength, the operator shall determine that the weight of the load is known within plus or minus (+/-) ten percent (10%) before making lift. **DO NOT** lift load or extend boom without counterweight in place. Deductions from rated capacities must be made for the weight of the hook block, hook/ball, slings, spreader bar, or other suspended equipment.

Side pull on boom is extremely dangerous and must be avoided.

DO NOT exceed manufacturers maximum specified reeving.

DO NOT use this chart if wind speed exceeds 20 mph. Consult the manufacturer for specialized load ratings.

Load radius is defined as the horizontal distance from the axis of rotation (with no load) to the center of the lifting device after load is applied.

Boom angle is the included angle between the Longitudinal axis of the boom base section and the Horizontal axis, after lifting load. The boom angle before lifting should be slightly greater than desired to account for boom deflection.

Boom angle/boom length relationships given are an approximation of the resulted load radius, which should be an accurate measurement.

Boom height dimensions are measured from ground to center of lower boom head sheave.

It is permissible to attempt to telescope boom with a load within the limits of rated capacities. However, boom angle system hydraulic pressure, and/or boom lubrication may affect operation.

It is permissible to travel with loads within the rated capacity of the crane. Travel speeds should be greatly reduced to reflect terrain limitations and minimize dynamic loads applied to the crane structure.

LOAD CHART SELECTION & LOAD MOMENT INDICATOR SETTING INFORMATION

Each Load Chart in this document corresponds to a particular crane configuration. The Load Moment Indicator system must be set to match the configuration in use. If it is set improperly, the crane may function poorly or not at all

The chart below shows the Operating Modes and corresponding crane configurations available.

NOTE:

If you are certain that a load is within load chart limits but the crane will not lift it, check the selected reeving and crane configuration.

Operating Mode Number	Crane Configuration	Track Position	Counter-weight (lb)	Allowable Reeving (Parts of Line)	Load Chart Number
1	Main Boom	Fully Extended	35,000	1 to 10	1
2	Main Boom	Fully Extended	17,500	1 to 10	2
3	Main Boom	Fully Extended	NO CWT	1 to 10	3
4	Main Boom	Retracted	35,000	1 to 10	4
5	Main Boom	Retracted	17,500	1 to 10	5
6	Auxiliary Boom Nose Sheave	Fully Extended	35,000	1	6
7	Auxiliary Boom Nose Sheave	Fully Extended	17,500	1	7
8	Auxiliary Boom Nose Sheave	Fully Extended	NO CWT	1	8
16	Auxiliary Boom Nose Sheave	Retracted	35,000	1	9
17	Auxiliary Boom Nose Sheave	Retracted	17,500	1	10
18	30ft Extension	Fully Extended	35,000	1 or 2	11
19	30ft Extension	Fully Extended	17,500	1 or 2	12
20	20ft Jib - 0° Offset	Fully Extended	35,000	1	13
21	20ft Jib - 15° Offset	Fully Extended	35,000	1	13
22	20ft Jib - 30° Offset	Fully Extended	35,000	1	13
23	20ft Jib - 0° Offset	Fully Extended	17,500	1	13

34	20ft Jib - 15° Offset	Fully Extended	17,500	1	13
35	20ft Jib - 30° Offset	Fully Extended	17,500	1	13
36	Work Platform on Main Boom	Fully Extended	35,000	NA	See Operating Range Chart
37	Work Platform on 30ft Extension	Fully Extended	35,000	NA	See Operating Range Chart

LIFTING CAPACITY DEDUCTIONS FOR LOAD HANDLING DEVICES

MANTIS Model 15010

75 ton Crawler Crane

as originally manufactured and equipped by Tadano Mantis Corporation.

Weight Reductions for Load Handling Devices	
Hookblocks	
75 Ton - 5 Sheave	1750 lb
12 Ton Overhaul Ball w/Swivel	440 lb
Optional Load Handling Devices	
30ft Extension - Stowed*	350 lb
30ft Extension - Erected*	2000 lb
30ft Ext. and 20ft Jib - Stowed*	750 lb
30ft Ext. and 20ft Jib - Erected*	3500 lb
Auxiliary Nose Sheave*	250 lb
Auger Ready Package*	200 lb
Auger Package Complete - Stowed*	450 lb
Auger Package Complete - Erected*	1120 lb
*Reduction of main boom capacities	

NOTE:

All values shown apply to original equipment as supplied by Tadano Mantis Corporation. The above deductions should be taken into account when calculating the load to be lifted. If lifting devices other than those supplied by the manufacturer are used, deductions should be made based the weights of those components.

A properly calibrated and maintained Load Moment Indicating (LMI) system will indicate boom mounted and other suspended equipment.

CHART #1**MANTIS Model 15010**

as originally manufactured and equipped by Tadano Mantis Corporation.

360 DEGREE RATING - LOADS IN lb x 1000

MAIN BOOM with TRACKS FULLY EXTENDED									
35,000 lb COUNTERWEIGHT									
RADIUS (ft)	MAIN BOOM LENGTH (ft)								RADIUS (ft)
	37.5	45.4	53.3	61.2	73.8	86.4	99.0	111.6	
10	154.0	107.5	105.0	103.0					10
12	136.5	104.0	100.0	90.0					12
15	114.0	102.0	94.0	82.0	64.5				15
20	81.8	81.0	79.0	68.0	59.0	51.0	46.0		20
25	59.7	59.4	59.0	58.7	50.0	42.0	38.5	36.0	25
30	44.2	44.0	43.7	43.4	44.5	36.8	33.2	31.0	30
35		34.2	33.9	33.7	34.8	34.3	29.0	26.7	35
40		32.6	27.2	27.0	28.0	28.6	25.5	23.0	40
45			22.3	22.0	23.1	23.6	24.0	21.9	45
50				18.3	19.3	19.8	20.4	19.7	50
55				15.3	16.3	16.8	17.4	17.5	55
60					13.9	14.4	15.0	15.0	60
65					12.0	12.4	13.0	13.0	65
70						10.8	11.3	11.4	70
75						9.3	9.9	9.9	75
80						8.1	8.6	8.7	80
85							7.6	7.6	85
90							6.6	6.7	90
95							5.8	5.9	95
100								5.1	100
105								4.5	105

NOTE:

Capacities appearing above the bold line are based on structural strength; tipping should not be relied upon as a capacity limitation.

Capacities appearing below the bold line are based on stability and do not exceed 75% of tipping.

CHART #2**MANTIS Model 15010**

as originally manufactured and equipped by Tadano Mantis Corporation.

360 DEGREE RATING - LOADS IN lb x 1000

MAIN BOOM with TRACKS FULLY EXTENDED									
17,500 lb COUNTERWEIGHT									
RADIUS (ft)	MAIN BOOM LENGTH (ft)								RADIUS (ft)
	37.5	45.4	53.3	61.2	73.8	86.4	99.0	111.6	
10	154.0	107.5	105.0	103.0					10
12	136.5	104.0	100.0	90.0					12
15	114.0	102.0	94.0	82.0	64.5				15
20	63.6	64.1	63.9	63.3	59.0	51.0	46.0		20
25	42.3	42.7	42.6	42.1	43.9	42.0	38.5	36.0	25
30	30.5	30.9	30.8	30.4	32.1	33.2	33.2	31.0	30
35		23.5	23.4	23.0	24.6	25.7	26.2	26.5	35
40		22.2	18.3	17.9	19.4	20.5	20.9	21.3	40
45			14.5	14.1	15.6	16.7	17.1	17.4	45
50				11.3	12.7	13.8	14.2	14.5	50
55				9.0	10.5	11.5	11.9	12.2	55
60					8.6	9.6	10.0	10.3	60
65					7.1	8.1	8.5	8.8	65
70						6.8	7.2	7.5	70
75						5.7	6.1	6.4	75
80						4.8	5.2	5.4	80
85							4.4	4.6	85
90							3.6	3.9	90
95							3.0	3.3	95
100								2.7	100
105								2.2	105

NOTE:

Capacities appearing above the bold line are based on structural strength; tipping should not be relied upon as a capacity limitation.

Capacities appearing below the bold line are based on stability and do not exceed 75% of tipping.

CHART #3**MANTIS Model 15010**

as originally manufactured and equipped by Tadano Mantis Corporation.

360 DEGREE RATING - LOADS IN lb x 1000

MAIN BOOM with TRACKS FULLY EXTENDED									
NO COUNTERWEIGHT									
RADIUS (ft)	MAIN BOOM LENGTH (ft)								RADIUS (ft)
	37.5	45.4	53.3	61.2	73.8	86.4	99.0	111.6	
10	143.0	107.5	105.0	103.0					10
12	119.0	104.0	100.0	90.0					12
15	80.0	79.6	79.3	78.8	64.5				15
20	43.5	43.3	43.1	42.7	44.1	44.9	45.8		20
25	28.2	28.0	27.9	27.6	28.7	29.4	30.3	31.0	25
30	19.8	19.6	19.5	19.3	20.3	20.9	21.7	22.4	30
35		14.3	14.2	14.0	15.0	15.6	16.3	16.9	35
40		13.4	10.6	10.4	11.3	11.9	12.6	13.2	40
45			7.9	7.7	8.6	9.1	9.8	10.4	45
50				5.7	6.5	7.1	7.7	8.3	50
55				4.0	4.9	5.4	6.1	6.6	55
60					3.6	4.1	4.8	5.3	60
65					2.5	3.0	3.7	4.2	65
70						2.1	2.7	3.3	70
75						1.3	2.0	2.5	75
80						NR	1.3	1.8	80
85							NR	1.2	85
90							NR	NR	90
95							NR	NR	95
100								NR	100
105								NR	105

NOTE:

Capacities appearing above the bold line are based on structural strength; tipping should not be relied upon as a capacity limitation.

Capacities appearing below the bold line are based on stability and do not exceed 75% of tipping.

CHART #4

MANTIS Model 15010

as originally manufactured and equipped by Tadano Mantis Corporation.

360 DEGREE RATING - LOADS IN lb x 1000

MAIN BOOM with TRACKS RETRACTED									
35,000 lb COUNTERWEIGHT									
RADIUS (ft)	MAIN BOOM LENGTH (ft)								RADIUS (ft)
	37.5	45.4	53.3	61.2	73.8	86.4	99.0	111.6	
10.0	*	*	*	*					10.0
12.0	*	*	100.0	90.0					12.0
15.0	85.0	84.0	83.4	82.0	64.5				15.0
20.0	53.8	53.0	52.4	52.1	53.4	51.0	46.0		20.0
25.0	38.1	37.4	37.0	36.6	37.8	38.7	38.5	36.0	25.0
30.0	28.8	28.1	27.7	27.4	28.5	29.3	29.9	30.3	30.0
35.0		21.9	21.5	21.2	22.3	23.1	23.6	24.1	35.0
40.0		17.4	17.1	16.8	17.9	18.6	19.2	19.6	40.0
45.0			13.7	13.5	14.5	15.3	15.8	16.2	45.0
50.0				10.9	11.9	12.7	13.2	13.6	50.0
55.0				8.8	9.9	10.6	11.1	11.5	55.0
60.0					8.2	8.9	9.4	9.8	60.0
65.0					6.8	7.5	8.0	8.4	65.0
70.0						6.3	6.8	7.2	70.0
75.0						5.2	5.7	6.1	75.0
80.0						4.3	4.9	5.2	80.0
85.0							4.1	4.5	85.0
90.0							3.4	3.8	90.0
95.0							2.8	3.2	95.0
100.0								2.6	100.0
105.0								2.1	105.0

WARNING

WITH TRACKS RETRACTED AND BOOM POSITIONED "OVER THE SIDE", THIS EQUIPMENT IS LIMITED BY BACKWARD STABILITY!

BACKWARD STABILITY OF THIS EQUIPMENT IS ITS ABILITY TO RESIST OVERTURNING IN THE DIRECTION OPPOSITE THE BOOM POINT WHILE IN THE UNLOADED CONDITION.

BOOM POSTIONS MARKED WITH AN * ON THE CHART INDICATE AN AREA LIMITED BY BACKWARD STABILITY. IF THE CRANE IN THIS CONFIGURATION WITH BOOM UNLOADED THE ESTABLISHED LIMITS OF BACKWARD STABILITY WILL BE EXCEEDED AND BACKWARD OVERTURNING MAY OCCUR !!!!

NOTE:

Capacities appearing above the bold line are based on structural strength; tipping should not be relied upon as a capacity limitation.

Capacities appearing below the bold line are based on stability and do not exceed 75% of tipping.

CHART #5

MANTIS Model 15010

as originally manufactured and equipped by Tadano Mantis Corporation.

360 DEGREE RATING - LOADS IN lb x 1000

MAIN BOOM with TRACKS RETRACTED									
17,500 lb COUNTERWEIGHT									
RADIUS (ft)	MAIN BOOM LENGTH (ft)								RADIUS (ft)
	37.5	45.4	53.3	61.2	73.8	86.4	99.0	111.6	
10.0	130.5	107.5	105.0	103.0					10.0
12.0	90.6	89.5	88.8	88.2					12.0
15.0	60.8	59.9	59.3	58.8	60.3				15.0
20.0	37.7	36.9	36.4	36.0	37.2	38.1	38.8		20.0
25.0	26.1	25.4	24.9	24.6	25.7	26.5	27.1	27.6	25.0
30.0	19.2	18.5	18.1	17.8	18.8	19.6	20.2	20.6	30.0
35.0		13.9	13.5	13.2	14.2	15.0	15.5	16.0	35.0
40.0		10.6	10.2	10.0	10.9	11.6	12.2	12.6	40.0
45.0			7.8	7.5	8.5	9.2	9.7	10.1	45.0
50.0				5.6	6.6	7.2	7.8	8.2	50.0
55.0				4.1	5.0	5.7	6.2	6.6	55.0
60.0					3.8	4.4	5.0	5.4	60.0
65.0					2.7	3.4	3.9	4.3	65.0
70.0						2.5	3.0	3.4	70.0
75.0						1.7	2.3	2.7	75.0
80.0						1.1	1.6	2.0	80.0
85.0							1.0	1.4	85.0
90.0							NR	NR	90.0
95.0							NR	NR	95.0
100.0								NR	100.0
105.0								NR	105.0

NOTE:

Capacities appearing above the bold line are based on structural strength; tipping should not be relied upon as a capacity limitation.

Capacities appearing below the bold line are based on stability and do not exceed 75% of tipping.

CHART #6

MANTIS Model 15010

as originally manufactured and equipped by Tadano Mantis Corporation.

360 DEGREE RATING - LOADS IN lb x 1000

AUXILIARY BOOM NOSE SHEAVE with TRACKS FULLY EXTENDED									
35,000 lb COUNTERWEIGHT									
RADIUS (ft)	MAIN BOOM LENGTH (ft)							RADIUS (ft)	
	37.5	45.4	53.3	61.2	73.8	86.4	99.0		111.6
10	11.0	11.0	11.0	11.0					10
12	11.0	11.0	11.0	11.0					12
15	11.0	11.0	11.0	11.0	11.0				15
20	11.0	11.0	11.0	11.0	11.0	11.0	11.0		20
25	11.0	11.0	11.0	11.0	11.0	11.0	11.0	11.0	25
30	11.0	11.0	11.0	11.0	11.0	11.0	11.0	11.0	30
35		11.0	11.0	11.0	11.0	11.0	11.0	11.0	35
40		11.0	11.0	11.0	11.0	11.0	11.0	11.0	40
45			11.0	11.0	11.0	11.0	11.0	11.0	45
50				11.0	11.0	11.0	11.0	11.0	50
55				11.0	11.0	11.0	11.0	11.0	55
60					11.0	11.0	11.0	11.0	60
65					11.0	11.0	11.0	11.0	65
70						10.6	11.0	11.0	70
75						9.1	9.7	9.7	75
80						7.9	8.4	8.5	80
85							7.4	7.4	85
90							6.4	6.5	90
95							5.6	5.7	95
100								4.9	100
105								4.3	105

NOTE:

Capacities appearing above the bold line are based on structural strength; tipping should not be relied upon as a capacity limitation.

Capacities appearing below the bold line are based on stability and do not exceed 75% of tipping.

CHART #7

MANTIS Model 15010

as originally manufactured and equipped by Tadano Mantis Corporation.

360 DEGREE RATING - LOADS IN lb x 1000

AUXILIARY BOOM NOSE SHEAVE with TRACKS FULLY EXTENDED									
17,500 lb COUNTERWEIGHT									
RADIUS (ft)	MAIN BOOM LENGTH (ft)								RADIUS (ft)
	37.5	45.4	53.3	61.2	73.8	86.4	99.0	111.6	
10	11.0	11.0	11.0	11.0					10
12	11.0	11.0	11.0	11.0					12
15	11.0	11.0	11.0	11.0	11.0				15
20	11.0	11.0	11.0	11.0	11.0	11.0	11.0		20
25	11.0	11.0	11.0	11.0	11.0	11.0	11.0	11.0	25
30	11.0	11.0	11.0	11.0	11.0	11.0	11.0	11.0	30
35		11.0	11.0	11.0	11.0	11.0	11.0	11.0	35
40		11.0	11.0	11.0	11.0	11.0	11.0	11.0	40
45			11.0	11.0	11.0	11.0	11.0	11.0	45
50				11.0	11.0	11.0	11.0	11.0	50
55				8.8	10.3	11.0	11.0	11.0	55
60					8.4	9.4	9.8	10.1	60
65					6.9	7.9	8.3	8.6	65
70						6.6	7.0	7.3	70
75						5.5	5.9	6.2	75
80						4.6	5.0	5.2	80
85							4.2	4.4	85
90							3.4	3.7	90
95							2.8	3.1	95
100								2.5	100
105								2.0	105

NOTE:

Capacities appearing above the bold line are based on structural strength; tipping should not be relied upon as a capacity limitation.

Capacities appearing below the bold line are based on stability and do not exceed 75% of tipping.

CHART #8

MANTIS Model 15010

as originally manufactured and equipped by Tadano Mantis Corporation.

360 DEGREE RATING - LOADS IN lb x 1000

AUXILIARY BOOM NOSE SHEAVE with TRACKS FULLY EXTENDED									
NO COUNTERWEIGHT									
RADIUS (ft)	MAIN BOOM LENGTH (ft)								RADIUS (ft)
	37.5	45.4	53.3	61.2	73.8	86.4	99.0	111.6	
10	11.0	11.0	11.0	11.0					10
12	11.0	11.0	11.0	11.0					12
15	11.0	11.0	11.0	11.0	11.0				15
20	11.0	11.0	11.0	11.0	11.0	11.0	11.0		20
25	11.0	11.0	11.0	11.0	11.0	11.0	11.0	11.0	25
30	11.0	11.0	11.0	11.0	11.0	11.0	11.0	11.0	30
35		11.0	11.0	11.0	11.0	11.0	11.0	11.0	35
40		10.9	10.4	10.2	11.0	11.0	11.0	11.0	40
45			7.7	7.5	8.4	8.9	9.6	10.2	45
50				5.5	6.3	6.9	7.5	8.1	50
55				3.8	4.7	5.2	5.9	6.4	55
60					3.4	3.9	4.6	5.1	60
65					2.3	2.8	3.5	4.0	65
70						1.9	2.5	3.1	70
75						1.1	1.8	2.3	75
80						NR	1.1	1.6	80
85							NR	1.0	85
90							NR	NR	90
95							NR	NR	95
100								NR	100
105								NR	105

NOTE:

Capacities appearing above the bold line are based on structural strength; tipping should not be relied upon as a capacity limitation.

Capacities appearing below the bold line are based on stability and do not exceed 75% of tipping.

CHART #9**MANTIS Model 15010**

as originally manufactured and equipped by Tadano Mantis Corporation.

360 DEGREE RATING - LOADS IN lb x 1000

AUXILIARY BOOM NOSE SHEAVE with TRACKS RETRACTED									
35,000 lb COUNTERWEIGHT									
RADIUS (ft)	MAIN BOOM LENGTH (ft)								RADIUS (ft)
	37.5	45.4	53.3	61.2	73.8	86.4	99.0	111.6	
10	*	*	*	*					10
12	*	*	11.0	11.0					12
15	11.0	11.0	11.0	11.0	11.0				15
20	11.0	11.0	11.0	11.0	11.0	11.0	11.0		20
25	11.0	11.0	11.0	11.0	11.0	11.0	11.0	11.0	25
30	11.0	11.0	11.0	11.0	11.0	11.0	11.0	11.0	30
35		11.0	11.0	11.0	11.0	11.0	11.0	11.0	35
40		11.0	11.0	11.0	11.0	11.0	11.0	11.0	40
45			11.0	11.0	11.0	11.0	11.0	11.0	45
50				10.7	11.0	11.0	11.0	11.0	50
55				8.6	9.7	10.4	10.9	11.0	55
60					8.0	8.7	9.2	9.6	60
65					6.6	7.3	7.8	8.2	65
70						6.1	6.6	7.0	70
75						5.0	5.5	5.9	75
80						4.1	4.7	5.0	80
85							3.9	4.3	85
90							3.2	3.6	90
95							2.6	3.0	95
100								2.4	100
105								1.9	105

WARNING

WITH TRACKS RETRACTED AND BOOM POSITIONED "OVER THE SIDE", THIS EQUIPMENT IS LIMITED BY **BACKWARD STABILITY!**

BACKWARD STABILITY OF THIS EQUIPMENT IS ITS ABILITY TO RESIST OVERTURNING IN THE DIRECTION OPPOSITE THE BOOM POINT WHILE IN THE **UNLOADED** CONDITION.

BOOM POSITIONS MARKED WITH AN * ON THE CHART INDICATE AN AREA LIMITED BY BACKWARD STABILITY. IF THE CRANE IN THIS CONFIGURATION WITH BOOM UNLOADED THE ESTABLISHED LIMITS OF BACKWARD STABILITY WILL BE EXCEEDED AND BACKWARD OVERTURNING MAY OCCUR !!!!

NOTE:

Capacities appearing above the bold line are based on structural strength; tipping should not be relied upon as a capacity limitation.

Capacities appearing below the bold line are based on stability and do not exceed 75% of tipping.

CHART #10

MANTIS Model 15010

as originally manufactured and equipped by Tadano Mantis Corporation.

360 DEGREE RATING - LOADS IN lb x 1000

AUXILIARY BOOM NOSE SHEAVE with TRACKS RETRACTED									
17,500 lb COUNTERWEIGHT									
RADIUS (ft)	MAIN BOOM LENGTH (ft)								RADIUS (ft)
	37.5	45.4	53.3	61.2	73.8	86.4	99.0	111.6	
10	11.0	11.0	11.0	11.0					10
12	11.0	11.0	11.0	11.0					12
15	11.0	11.0	11.0	11.0	11.0				15
20	11.0	11.0	11.0	11.0	11.0	11.0	11.0		20
25	11.0	11.0	11.0	11.0	11.0	11.0	11.0	11.0	25
30	11.0	11.0	11.0	11.0	11.0	11.0	11.0	11.0	30
35		11.0	11.0	11.0	11.0	11.0	11.0	11.0	35
40		10.4	10.0	9.8	10.7	11.0	11.0	11.0	40
45			7.6	7.3	8.3	9.0	9.5	9.9	45
50				5.4	6.4	7.0	7.6	8.0	50
55				3.9	4.8	5.5	6.0	6.4	55
60					3.6	4.2	4.8	5.2	60
65					2.5	3.2	3.7	4.1	65
70						2.3	2.8	3.2	70
75						1.5	2.1	2.5	75
80						0.9	1.4	1.8	80
85							0.8	1.2	85
90							NR	NR	90
95							NR	NR	95
100								NR	100
105								NR	105

NOTE:

Capacities appearing above the bold line are based on structural strength; tipping should not be relied upon as a capacity limitation.

Capacities appearing below the bold line are based on stability and do not exceed 75% of tipping.

CHARTS #11 & 12

MANTIS Model 15010

as originally manufactured and equipped by Tadano Mantis Corporation.

360 DEGREE RATING - LOADS IN lb x 1000

30' EXTENSION with TRACKS FULLY EXTENDED				
35,000 lb COUNTERWEIGHT		17,500 lb COUNTERWEIGHT		
Boom Angle	All Boom Lengths	Total Boom Length		Boom Angle
		67.5' to 129'	> 129'	
78°	18.0	18.0	18.0	78°
75°	13.6	13.6	13.6	75°
72°	11.5	11.5	11.5	72°
70°	10.1	10.1	10.1	70°
68°	8.9	8.9	8.9	68°
65°	8.0	8.0	8.0	65°
62°	7.2	7.2	7.2	62°
60°	6.7	6.7	6.7	60°
58°	6.1	6.1	6.1	58°
55°	5.8	5.8	5.8	55°
52°	5.3	5.3	5.3	52°
50°	5.1	5.1	4.8	50°
48°	4.9	4.9	4.2	48°
45°	4.6	4.6	3.5	45°

NOTE:

Capacities appearing above the bold line are based on structural strength; tipping should not be relied upon as a capacity limitation.
 Capacities appearing below the bold line are based on stability and do not exceed 75% of tipping.

CHART #13**MANTIS Model 15010**

as originally manufactured and equipped by Tadano Mantis Corporation.

360 DEGREE RATING - LOADS IN lb x 1000

30' EXTENSION + 20' JIB with TRACKS FULLY EXTENDED 35,000 lb or 17,500 lb COUNTERWEIGHT				
20' JIB				
Boom Angle	Jib Offset Angles			Boom Angle
	0°	15°	30°	
78°	6.6	4.0	2.2	78°
75°	6.3	4.0	2.1	75°
72°	5.6	3.5	2.0	72°
70°	5.1	3.2	1.9	70°
68°	4.6	3.0	1.8	68°
65°	4.2	2.8	1.8	65°
62°	3.9	2.6	1.7	62°
60°	3.5	2.4	1.7	60°
58°	3.2	1.9	1.4	58°
55°	2.6	1.3	1.0	55°
52°	2.0	0.6	0.4	52°
50°	1.5	0.3	0.2	50°

NOTE:

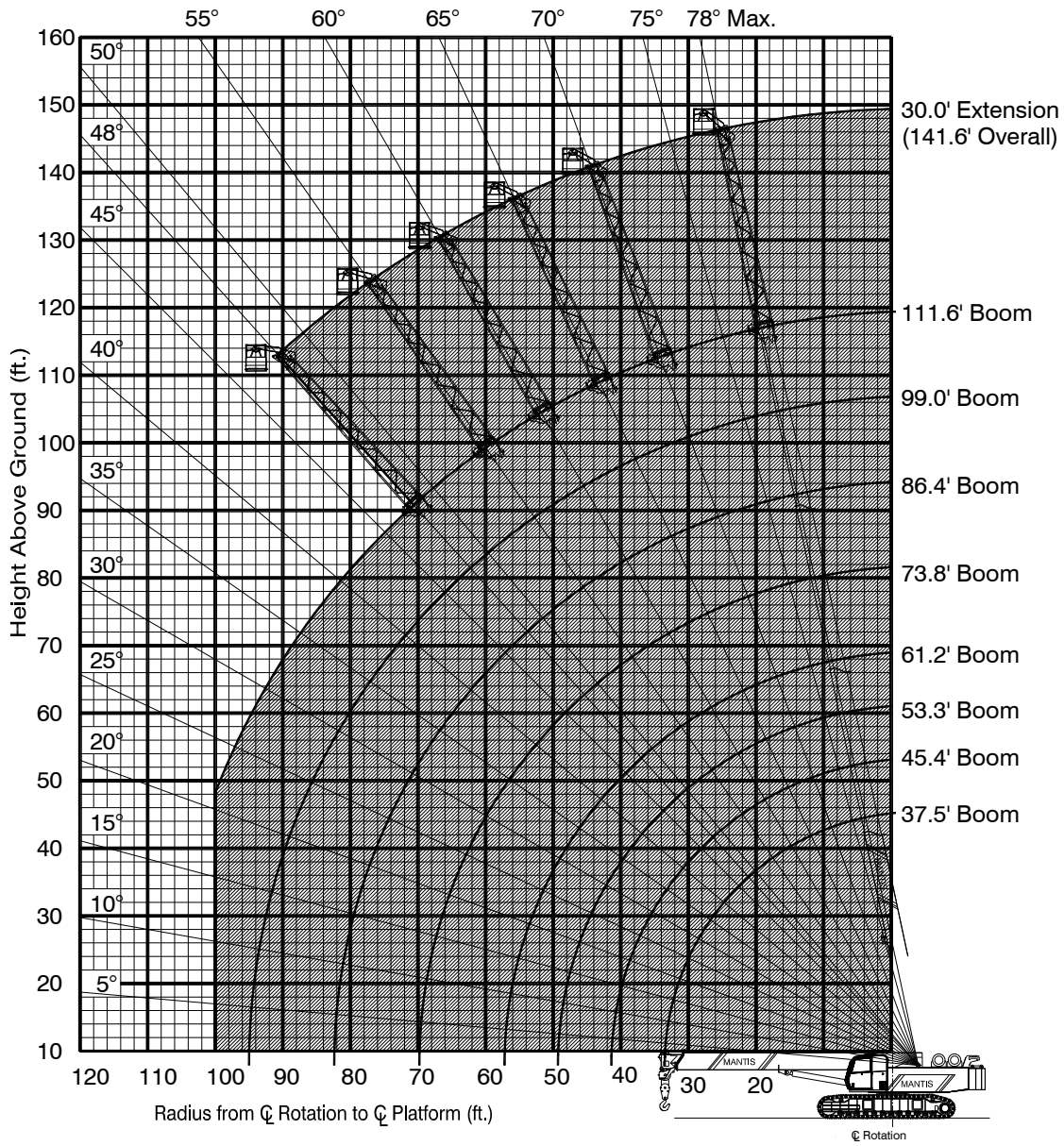
All capacities are based on structural strength; tipping should not be relied upon as a capacity limitation.
Never use jib without rearmost counterweight in place.

RANGE CHART

750 WORK PLATFORM

Installed on MANTIS MODEL 15010

as originally manufactured and equipped by Tadano Mantis Corporation



Limits of operation:
Maximum load capacity = 750 lb
Maximum radius when mounted on main boom = 100 ft
Minimum boom angle when mounted on 30 ft extension = 48°

RANGE CHART

MANTIS MODEL 15010

as originally manufactured and equipped by Tadano Mantis Corporation

