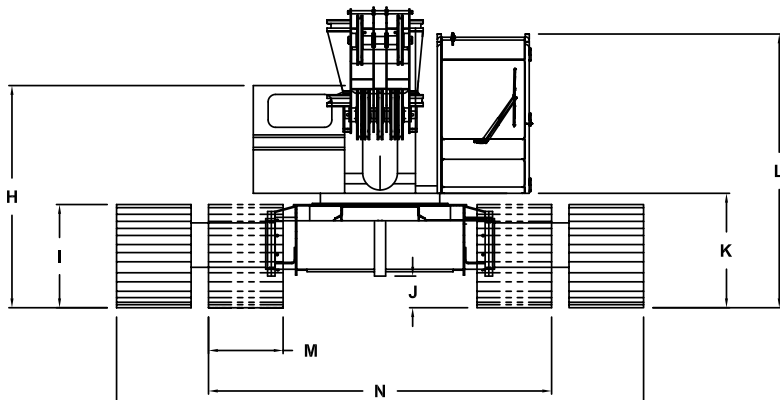
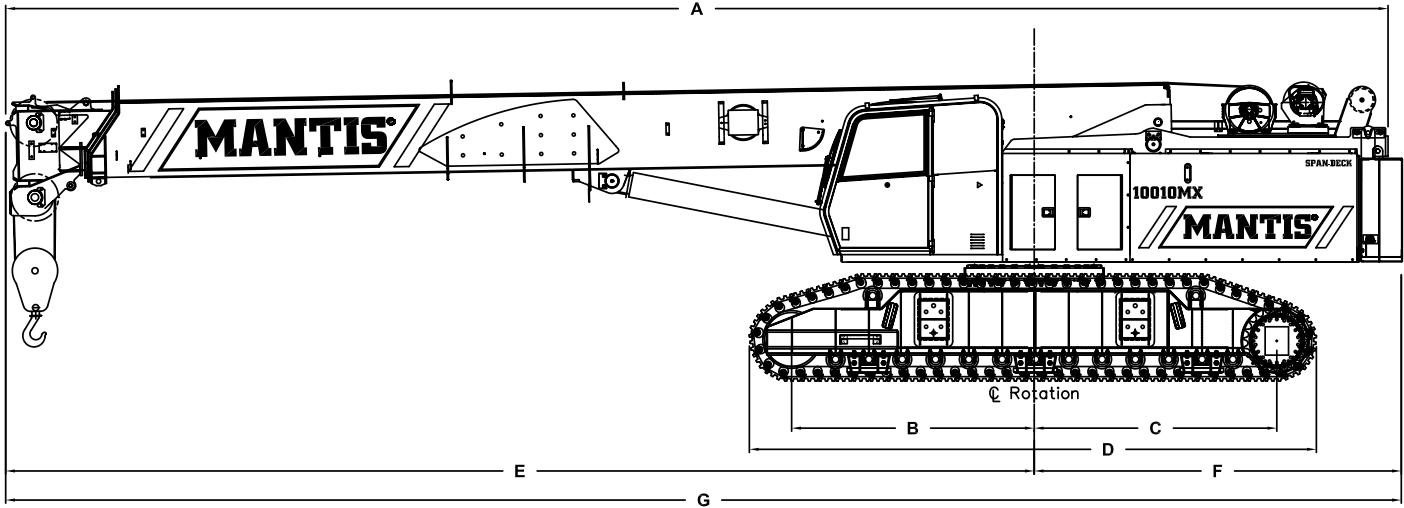




SPECIFICATIONS

MANTIS® 10010Mx 50 TON TELE-BOOM CRAWLER CRANE



PRINCIPAL DIMENSIONS

| | | |
|---|-------------------------------------|-------------------------|
| A | Length (Counterweight Removed) | 46 ft 11 in (14.30 m) |
| B | CL Front Track Drive to CL Rotation | 8 ft 2 in (2.49 m) |
| C | CL Rear Track Drive to CL Rotation | 8 ft 2 in (2.49 m) |
| D | Track Length | 19 ft 0 in (5.79 m) |
| E | Boom Length to Rotation | CL 34 ft 1 in (10.39 m) |
| F | Tailswing | 13 ft 8 in (4.17 m) |
| G | Overall Length | 47 ft 4 in (14.43 m) |
| H | Ground to Top of Engine Cover | 8 ft 4 in (2.54 m) |
| I | Track Height | 42 in (1.07 m) |
| J | Ground Clearance | 13 in (330 mm) |
| K | Ground to Bottom of Cab | 48 in (1.22 m) |
| L | Maximum Overall Height | 9 ft 5 in (2.87 m) |
| M | Track Width | 36 in (900 mm) |
| N | Overall Width (Tracks Retracted) | 12 ft 0 in (3.66 m) |
| O | Overall Working Width | 18 ft 4 in (5.59 m) |

WIDTHS, WEIGHTS, AND GROUND PRESSURES*

| Shoe Width | Overall Width | | Area | Ground Pressure | Working Weight |
|----------------|---------------------|---------------------|---|-------------------------------------|------------------------|
| | Retracted | Extended | | | |
| 24 in (609 mm) | 11 ft 0 in (3.35 m) | 17 ft 2 in (5.23 m) | 9,360 in ² (6.04 m ²) | 10.7 psi (0.75 kg/cm ²) | 99,690 lb (45,220 kg) |
| 30 in (762 mm) | 11 ft 6 in (3.51 m) | 17 ft 8 in (5.39 m) | 11,700 in ² (7.55 m ²) | 8.7 psi (0.61 kg/cm ²) | 101,670 lb (46,120 kg) |
| 36 in (900 mm) | 12 ft 0 in (3.66 m) | 18 ft 4 in (5.59 m) | 14,040 in ² (9.06 m ²) | 7.4 psi (0.52 kg/cm ²) | 103,640 lb (47,010 kg) |

* Crane equipped with: 111 ft 6 in boom, extension, jib, 50 ton hook block and 12 ton headache ball



SPECIFICATIONS

MANTIS® 10010Mx 50 TON TELE-BOOM CRAWLER CRANE

STANDARD CRANE AND EQUIPMENT

Boom

The boom consists of four full powered sections, 37 ft 6 in (11.43 m) retracted to 111 ft 6 in (33.99 m) fully extended. Maximum tip height is 117 ft (35.66 m).

Boom Telescoping & Elevating Systems

The telescoping system features two double-acting hydraulic cylinders and counterbalance lock valves. The elevating system features a cylinder and counterbalance lock valve which provide boom elevations from -1° to 78°.

Boom Head

Seven 19 in (483 mm) diameter, cast nylon sheaves on heavy-duty roller bearings are mounted in the boom head.

SUPERSTRUCTURE

Frame

The frame is an all-steel, welded structure, precision machined to accept attachment of the boom and swing devices.

Operator's Cab

The fully-enclosed, air conditioned all-steel modular cab includes a lockable swinging door, acoustical lining, anti-slip floor and tinted safety glass. Sliding windows are located in the cab door and cab boom side. A vent window is positioned in the rear of the cab. Grab bars and steps are appropriately located for easy access to the cab. Erectable swing barricades are attached to the superstructure. Rear view cameras are appropriately located as are work lights.

Standard cab accessories include a two-speed windshield wiper, top glass wiper, defroster, heater, circulating fan, adjustable hand and foot throttles, six-way adjustable fabric seat with headrest, seat belt, dome light, and a dry-chemical fire extinguisher.

Instrumentation

Dash instrumentation features a tachometer, voltmeter, oil pressure gauge, temperature gauge, hour meter and fuel gauge. Indicators are provided for crane level, load moment, drum rotation, air filter restriction, hydraulic oil temperature and filter restriction, engine oil pressure and temperature.

A termination switch is located in the seat and armrest and is capable of immediately disabling all hydraulic functions as the operator rises from the seat or it can be activated by lifting the left hand armrest.

Control

Two-way hydraulic joysticks mounted in the operator's seat armrests control swing, auxiliary hoist, main winch and boom hoist. Four two-way hydraulic foot pedals control travel, swing service brake and boom telescoping functions. A fifth pedal controls engine speed.

Counterweight

The one piece 20,000 lb (9,070 kg) counterweight can be removed and installed via a pendant attached to the boom.

Load Moment Indicator & Anti-Two Block¹

Standard Rated Capacity Limiter and Anti-Two Block system with audio-visual warning and control function shutdown. System's LCD screen provides a continuous electronic display of working boom length, boom angle, working load radius, tip height, parts-of-line (operator set), machine configuration, relative load moment, maximum permissible load and actual load. The standard Work Area Definition system allows the operator to pre-set and define working areas. Should pre-set limits be approached, audio-visual warnings aid the operator in avoiding job-site obstructions. The anti-two block weight allows quick reeving of hook blocks.

Swing

The superstructure rotates 360° around a shear ball slew bearing with an external gear that matches with the swing drive pinion and bolts to the superstructure and the carbody. The hydraulic swing drive powers the system and consists of a gear motor driving into a planetary reducer with a shaft mounted pinion providing infinitely variable speeds of up to 3 rpm. Swing braking is achieved through a "failsafe", hydraulically released, spring applied, multi-disc wet brake which includes a foot applied service brake. The brake can be electrically actuated through a cab mounted switch into a "locked-on" (parking) mode. A two position house lock system is included. Regular lubrication of the bearing is achieved through a cab mounted grease applicator.

Fuel System

An 80 US gal (303 l) tank is bolted to the superstructure. The fuel filtration system consists of an inline fuel/water separator as well as an engine mounted fuel filter.

Hydraulic System

The load sensing, open-loop hydraulic system is served by two variable volume pumps mounted in tandem. The pumps are horsepower limiting and pressure compensated providing a maximum output of 168 gpm (636 l/min) @ 2,200 rpm and maximum operating pressure of 4,850 psi (339.5 kg/cm²). An extra circuit is included for ready adaptation to hydraulic accessories. The system includes two pilot operated valve banks that are pressure and flow compensated. The 300 US gal (1,136 l) capacity hydraulic oil reservoir has a spin-on filler-breather cap, external sight gauge, clean-out access and a sump type drain. An air to oil remote mounted cooler provides oil cooling with thermostatically-controlled, electrically driven fans. Hydraulic oil filtering is achieved with two 5 micron full flow cartridge type filters designed to return in-tank with bypass protection and an electronic bypass indicator.

(System pressure test ports with quick disconnect fittings are provided for diagnostics.)



SPECIFICATIONS

MANTIS® 10010Mx 50 TON TELE-BOOM CRAWLER CRANE

MAIN HOIST

| Planetary geared two-speed winch includes a bent axis, variable displacement hydraulic motor and a multi-disc internal brake. Wire Rope: 600 ft (182 m) 5/8 in (16 mm) 6 x 37 EIPS, IWRC, RRL. Line pulls are not based on wire rope strength. Drum rotation indicator is standard. | | | | | | | | | | |
|--|-------------------|----------|--------------------|-------------|----------------------|------------|----------------|----------|--------|--------|
| Rope Layer | Maximum Line Pull | | No Load Line Speed | | Full Load Line Speed | | Pitch Diameter | | Layer | |
| 1 | 17,500 lb | 7,940 kg | 384 ft/min | 117.0 m/min | 178 ft/min | 54.3 m/min | 11.4 in | 288.9 mm | 76 ft | 23.2 m |
| 2 | 15,700 lb | 7,120 kg | 414 ft/min | 126.2 m/min | 193 ft/min | 58.8 m/min | 12.5 in | 316.3 mm | 83 ft | 25.4 m |
| 3 | 14,300 lb | 6,490 kg | 433 ft/min | 132.0 m/min | 202 ft/min | 61.6 m/min | 13.5 in | 343.6 mm | 91 ft | 27.6 m |
| 4 | 13,100 lb | 5,940 kg | 451 ft/min | 137.5 m/min | 210 ft/min | 64.0 m/min | 14.6 in | 370.9 mm | 98 ft | 29.8 m |
| 5 | 12,100 lb | 5,490 kg | 482 ft/min | 146.9 m/min | 225 ft/min | 68.6 m/min | 15.7 in | 398.3 mm | 105 ft | 32.0 m |
| 6 | 11,300 lb | 5,130 kg | 489 ft/min | 149.0 m/min | 228 ft/min | 69.5 m/min | 16.8 in | 425.6 mm | 112 ft | 34.2 m |

AUXILIARY HOIST

| Planetary geared single-speed winch includes a bent axis, variable displacement hydraulic motor and a multi-disc internal brake. Wire Rope: 350 ft (107 m) 5/8 in (16 mm) 6 x 37 EIPS, IWRC, RRL. Line pulls are not based on wire rope strength. Drum rotation indicator is standard. | | | | | | | | | | |
|---|-------------------|----------|----------------------|------------|----------------|----------|-------|--------|--------|---------|
| Rope Layer | Maximum Line Pull | | Full Load Line Speed | | Pitch Diameter | | Layer | | Total | |
| 1 | 12,000 lb | 5,440 kg | 182 ft/min | 55.5 m/min | 10.4 in | 263.5 mm | 60 ft | 18.2 m | 60 ft | 18.2 m |
| 2 | 10,700 lb | 4,850 kg | 196 ft/min | 59.7 m/min | 11.5 in | 290.9 mm | 66 ft | 20.1 m | 126 ft | 38.3 m |
| 3 | 9,800 lb | 4,450 kg | 208 ft/min | 63.4 m/min | 12.8 in | 324.8 mm | 74 ft | 22.5 m | 199 ft | 60.8 m |
| 4 | 9,000 lb | 4,080 kg | 217 ft/min | 66.1 m/min | 14.1 in | 358.8 mm | 81 ft | 24.8 m | 281 ft | 85.6 m |
| 5 | 8,300 lb | 3,760 kg | 233 ft/min | 71.0 m/min | 15.5 in | 392.8 mm | 89 ft | 27.1 m | 370 ft | 112.7 m |

STANDARD ENGINE

| Cummins QSB215 (U.S. EPA Tier 3) | | | | | |
|---|--------------------|------------------|-------------------------|-------------------|----------------------------|
| Noise Emissions: Top 96.3 dBA (excludes noise from intake, exhaust, cooling system and driven components) | | | | | |
| Type | 6 cyl Water Cooled | Weight (Wet) | 1056 lb (479 kg) | Aspiration | Turbocharged & Aftercooled |
| Displacement | 360 cu in (5.9 l) | Oil Capacity | 17.2 US quarts (16.3 l) | Air filter | Dry Type |
| Bore | 4.02 in (102 mm) | Rated Horsepower | 215 @ 2200 rpm | Electrical System | 12 volt |
| Stroke | 4.72 in (120 mm) | Peak Torque | 692 ft/lb @ 1500 rpm | Alternator | 100 amp |

MACHINE WEIGHTS

| STANDARD CRANE WITH 4 SECTION 111 ft 6 in (33.99 m) BOOM, 1 PIECE COUNTERWEIGHT & 36 in (914 mm) TRACK SHOES | 99,536 lb | 45,150 kg |
|---|-----------|-----------|
| Crane Less Counterweights and Track Frames | 55,936 lb | 25,370 kg |
| Counterweight | 20,000 lb | 9,070 kg |
| Track Frames, 2 pieces 11,800 lb (5,350 kg) each | 23,600 lb | 10,700 kg |
| OPTIONAL EQUIPMENT | | |
| 30 ft (9.14 m) Lattice Extension | 1,700 lb | 771 kg |
| 20 ft (6.10 m) Jib (connects to head of Lattice Extension ONLY) | 700 lb | 318 kg |
| Auxiliary Nose Sheave | 210 lb | 95 kg |
| 12 ton (11 mt) Headache Ball | 404 lb | 183 kg |
| 50 ton (45 mt) Hook Block | 1,300 lb | 590 kg |
| Auxiliary Winch with Standard Rope | 685 lb | 311 kg |
| Auger Ready Package | 440 lb | 200 kg |
| Complete Auger Package | 1520 lb | 690 kg |
| 60 in (1.52 m) Auger Kelly Bar | 120 lb | 54 kg |
| 72 in (1.83 m) Auger Kelly Bar | 140 lb | 64 kg |

* Deduction from Standard Crane Weight



SPECIFICATIONS

MANTIS® 10010Mx 50 TON TELE-BOOM CRAWLER CRANE

UNDERCARRIAGE

Carbody

The welded steel, box type carbody is fabricated with square axles to accept the crawler side frames. The top surface is precision machined to receive the swing bearing.

Side Frames

Two welded steel removable side frames are paired with a track group consisting of two top and thirteen bottom oil-filled and sealed rollers. Each frame includes an oil-filled, self-lubricating idler and spring type, track tensioning device. Standard track shoes are 36 in (900 mm) wide, 3-bar semi-grousers. Optional shoes are available in 24 in (609 mm) and 30 in (762 mm) widths flat pad and semi grouser configurations. 36 in flat pads are also available. The side frames extend and retract hydraulically and are electrically controlled from the cab.

Travel

Each side frame contains a pilot controlled, two-speed track drive. The drives are hydraulic piston motors which propel the crane at a low speed of 1.6 mph (2.6 km/hr) and at a high speed of 2.9 mph (4.7 km/hr). The internal brake system is spring applied and automatically released upon actuation of the travel system.

The hydraulic travel system provides skid steering and track counter-rotation and achieves an unladen gradeability of 57%.

OPTIONAL EQUIPMENT

Boom Attachments

- **Boom Extension:** 30 ft (9.14 m), lattice type swingaway that stores alongside of the boom base section and can be used with or without the optional 20 ft (6.10 m) jib. Head contains two 19 in (483 mm) diameter high strength cast nylon sheaves mounted on heavy-duty roller bearings, reeving up to 2 parts of wire rope. With optional extension deployed maximum tip height is 147 ft (44.81 m).
- **Boom Jib:** 20 ft (6.10 m) lattice type swing-away, attaches to and stores alongside the extension and can only be used with the extension deployed. Offsets are at 15° & 30°. With optional jib and extension deployed maximum tip height is 167 ft (50.90 m).
- **Auxiliary Nose Sheave:** quick reeve, single 19 in (483 mm) diameter high-strength, cast nylon sheave mounted on a heavy-duty roller bearing.
- **Wire Rope:** rotation resistant, (non-spin) Dyform-18 HSLR.
- **Headache Ball:** 12 ton (11 mt) ball includes a swivel hook with safety latch.
- **Hook Block:** 50 ton (45 mt) hook block consists of five 16 in (406 mm) diameter sheaves mounted on heavy-duty roller bearings with a swivel hook and safety latch.

Hydraulic

- **Auger Ready Package:** includes hoses, fasteners and stowage bracket assembly mounted to the base section of the boom with a flow capability of 34 gpm (130 l/min).
- **Complete Auger Package:** adds a two speed auger motor/gear box and one 60 in (1.52 m) kelly bar to the Auger Ready Package.
- **Tool Circuit:** provides 6 gpm (23 l/min) and 12 gpm (45 l/min) at 2,500 psi (176 kg/cm²) through a 50 ft (15.24 m) twin hose reel with quick disconnect fittings to operate open center tools.

Other Options

- **Free Fall Hoists:** all winches are available in free fall and controlled free fall configurations.
- **Crane Cab Access Walkways:** a pair of 54.5 in (1 384 mm) wide x 25 in (635 mm) deep walkways which attach to both the front and rear of the carbody and allow for easier egress and ingress to the operator's cab when the crane's upper rotating frame is not aligned front to rear.
- **Model WP750 Work Platform:** 36 in x 72 in (914 mm x 1 828 mm), all-steel, welded, two-person platform with a maximum capacity of 750 lb (340 kg). A test weight and boom head adapter are included in the package. Operation and control are by the crane operator from the cab. Radio (RF) controls to enable remote operation from the platform are available.

(See separate WP750 Specification for a complete description of standard and optional Work Platform equipment.)

*Load moment indicating and anti-two block systems are operator aids and must never be used in lieu of job site lift planning calculations by the operator which must take into account ground conditions, weather and all other environmental factors prevailing at the time of the lift. Prices and specifications are subject to change at any time without prior notice and are for factory installation at time of original manufacture. F.O.B Plant; Richlands, VA 24641. Illustrations and photographs may show optional equipment. Supercedes all previous issues. Please see www.mantiscranes.com for most current information.